



TEST REPORT: MFM-10-3.3

10W High Green Reliable Medical On Board Type

■ DESIGN VERIFY TEST

- Output Function Test
- Input Function Test
- Protection Function Test
- Control Function Test
- Component Stress Test

■ SAFETY & E.M.C. TEST

- Safety Test
- E.M.C. Test

■ RELIABILITY TEST

- ENVIRONMENT TEST



DESIGN VERIFY TEST
OUTPUT FUNCTION

NO	TEST ITEM	SPECIFICATION	TEST CONDITION	RESULT
1	OUTPUT VOLTAGE TOLERANCE (Max)	V1 : 2.5% ~ -2.5%	I/P : 100VAC / 264VAC O/P: FULL / MINLOAD TA= 25°C	V1: 0.54% ~ -0.18%
2	LINE REGULATION (MAX.)	V1 : 0.3% ~ -0.3%	I/P : 100VAC / 264VAC O/P: FULL LOAD TA: 25°C	V1: 0.00% ~ 0.00%
3	LOAD REGULATION(MAX.)	V1 : 0.5% ~ -0.5%	I/P : 230VAC O/P: MIN LOAD ~ FULL LOAD TA: 25°C	V1: 0.18% ~ -0.18%
4	OVER/UNDERSHOOT TEST	< ±15%	I/P : 230VAC O/P: FULL LOAD TA: 25°C	TEST< 4.6 %
5	RIPPLE & NOISE(Max)	V1 : 120 mVp-p	high frequency:	low frequency:
6	SET UP TIME (MAX.)	230VAC : 1000ms 115VAC : 1000ms	I/P : 230VAC I/P : 115VAC O/P: FULL LOAD TA: 25°C	230VAC : 428ms 115VAC : 384ms
		<p>INPUT=230VAC/50HZ @ FULL LOAD CH1 : Output Voltage CH2 : AC Input Voltage</p>	<p>INPUT=115VAC/60HZ @ FULL LOAD CH1 : Output Voltage CH2 : AC Input Voltage</p>	



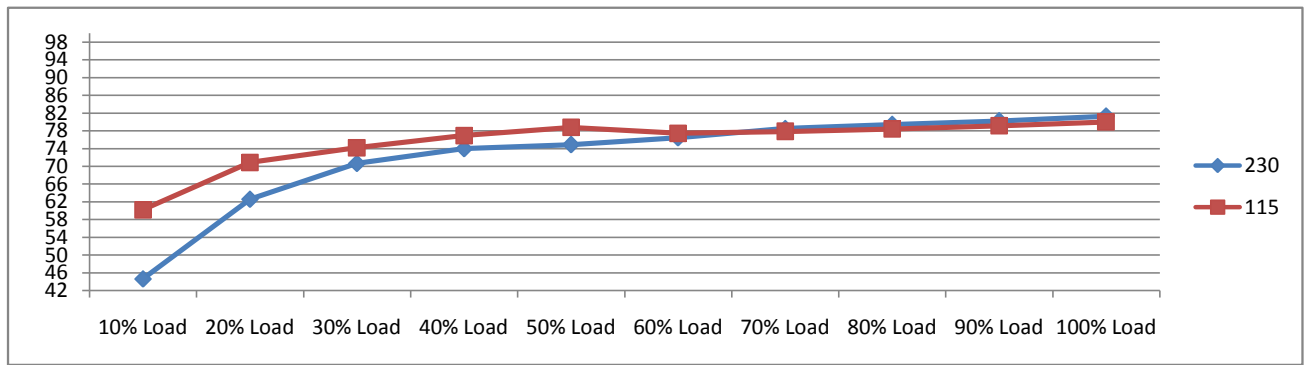
10W High Green Reliable Medical On Board Type MFM-10 series

7	RISE TIME (MAX.)	230VAC : 30ms 115VAC : 30ms	I/P : 230VAC I/P : 115VAC O/P: FULL LOAD TA : 25°C	230VAC : 7.2ms 115VAC : 7.8ms
	INPUT=230VAC/50HZ @ FULL LOAD CH1 : Output Voltage	INPUT=115VAC/60HZ @ FULL LOAD CH1 : Output Voltage		
8	HOLD UP TIME (TYP.)	230VAC : 40ms 115VAC : 8ms	I/P : 230VAC I/P : 115VAC O/P: FULL LOAD TA : 25°C	230VAC : 70.0ms 115VAC : 14.0ms
	INPUT=230VAC/50HZ @ FULL LOAD CH1 : Output Voltage CH2 : AC Input Voltage	INPUT=115VAC/60HZ @ FULL LOAD CH1 : Output Voltage CH2 : AC Input Voltage		
9	DYNAMIC LOAD	V1 : 990 mVp-p	I/P : 230VAC O/P: (1)Full/Min load 50%duty/120HZ (2)Full/Min load 50%duty/1KHZ TA : 25°C	(1). 422mv (2). 356mv unit:mVp-p
	FULL /MIN LOAD 50%DUTY / 120HZ	FULL /MIN% LOAD 50%DUTY / 1KHZ		
		13 Jun 2017 15:20:02		13 Jun 2017 15:22:40

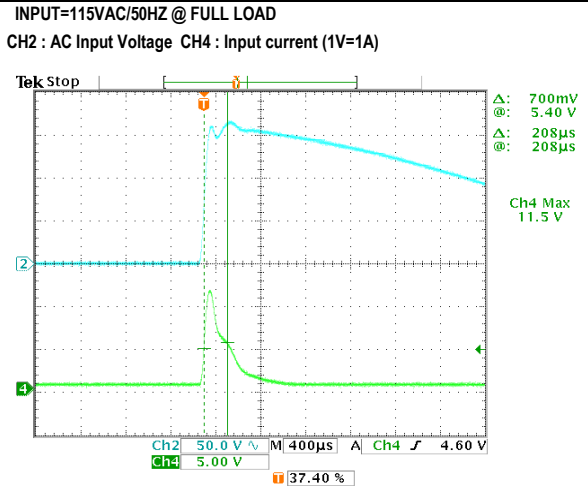
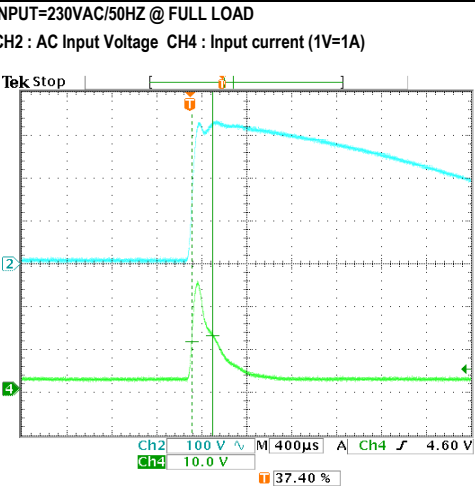


INPUT FUNCTION TEST

NO	TEST ITEM	SPECIFICATION	TEST CONDITION	RESULT
1	INPUT VOLTAGE RANGE	80VAC ~ 264VAC	I/P : TESTING O/P : FULL LOAD Ta : 25°C	64.0VAC ~ 264VAC
			I/P : LOW-LINE = 97VAC HIGH-LINE = 300VAC O/P : FULL/MIN LOAD ON:30 Sec ; OFF:30 Sec 10MIN (POWER ON/OFF NO DAMAGE)	TEST : OK
2	INPUT FREQUENCY RANGE	47HZ ~ 440HZ NO DAMAGE	I/P : 100VAC ~ 264VAC O/P : FULL-MIN LOAD Ta : 25°C	TEST : OK
3	INPUT CURRENT (TYP.)	0.2A / 230VAC 0.3A / 115VAC	I/P : 230VAC I/P : 115VAC O/P : FULL LOAD TA : 25°C	I= 0.082A / 230VAC I= 0.154A / 115VAC
4	LEAKAGE CURRENT	< 0.08mA	I/P : 264VAC O/P : MIN LOAD TA : 25°C	0.0269 mA
5	NO LOAD POWER CONSUMPTION	< 0.075W	I/P : 230VAC O/P : MIN LOAD TA : 25°C	< 0.0541 W
	EFFICIENCY (TYP.)	78.0%	I/P : 230VAC O/P : FULL LOAD TA : 25°C	81.3 %



7	INRUSH CURRENT (TYP.)	45A / 230VAC 25A / 115VAC twidth= 555 us measured at 50% Ipeak COLD START	I/P : 230VAC I/P : 115VAC O/P : FULL LOAD TA : 25°C	I= 25.2A / 230VAC I= 11.5A / 115VAC T50= 184.0us / 230VAC
		INPUT=230VAC/50HZ @ FULL LOAD CH2 : AC Input Voltage CH4 : Input current (1V=1A)	INPUT=115VAC/50HZ @ FULL LOAD CH2 : AC Input Voltage CH4 : Input current (1V=1A)	





10W High Green Reliable Medical On Board Type MFM-10 series

PROTECTION FUNCTION TEST

NO	TEST ITEM	SPECIFICATION	TEST CONDITION	RESULT
1	OVER LOAD PROTECTION	110% ~ 180%	I/P: 264VAC I/P: 230VAC I/P: 100VAC O/P: TESTING Ta: 25°C	147.60% 264VAC 144.10% 230VAC 131.20% 100VAC Hiccup Mode
2	OVER VOLTAGE PROTECTION	3.80V ~ 5.00V	Ta: 25°C	4.40V Shut off o/p voltage,damping by zener diode
3	OVER TEMPERATURE PROTECTION	Shut down Re- power ON	I/P: 264VAC I/P: 80VAC O/P: FULL LOAD	O.T.P. Active Shut down Re- power ON
4	SHORT PROTECTION	SHORT EVERY OUTPUT 1 HOUR NO DAMAGE	I/P: 264VAC I/P: 80VAC O/P: FULL LOAD Ta: 25°C	NO DAMAGE Hiccup Mode

COMPONENT STRESS TEST

NO	TEST ITEM	SPECIFICATION	TEST CONDITION	RESULT
1	PWM Power Transistor	U1 Rated : 800V 2.0A	I/P : 267VAC VDS : O/P : (1)Full Load Turn on (2) Output Short (3)Full load continue Ta : 25°C	VIN: 267VAC VDS: (1). 512.00V (2). 471.00V (3). 510.00V
2	O/P Diode	D100 Rated : 45V 10.0A	I/P : 267VAC VDS : O/P : (1)Full Load Turn on (2) Output Short (3)Full load continue	D100 VDS : (1). 26.30V (2). 30.20V (3). 26.50V
3	Input Capacitor	C5 Rated : 10uf 400V	I/P : 267VAC O/P : (1)Full Load Turn on /Off (2)Min load Turn on /Off (3)Full Load /Min load Change (4)Full Load Continue Ta : 25°C	(1). 376.00V (2). 378.00V (3). 376.00V (4). 376.00V
4	Control IC	U1 Rated : 27V (max) -0.3V (min)	I/P : 267VAC O/P : (1)Full Load (2)Output Short (3)O.L.P (4)Low Line No Load Vo(min) Ta : 25°C	U1 (1). 18.80V (2). 19.20V (3). 20.10V (4). 18.90V
5	Clamp Diode	D2 Rated : 1000V 1.0A	I/P : 267VAC O/P : (1)Dynamic Load Full/Min Load (2)Full load continue Ta : 25°C	(1). 484.00V (2). 480.00V

SAFETY & E.M.C. TEST

SAFETY TEST

NO	TEST ITEM	SPECIFICATION	TEST CONDITION	RESULT
1	WITHSTAND VOLTAGE	I/P-O/P : 4.000KVAC /min	I/P-O/P: 4.250KVAC /min Ta : 25°C	I/P-O/P: 0.62mA NO DAMAGE
2	ISOLATION RESISTANCE	I/P-O/P : 500VDC>100MΩ	I/P-O/P: 500VDC Ta : 25°C /70%RH	I/P-O/P: 9999MΩ NO DAMAGE

E.M.C. TEST

NO	TEST ITEM	SPECIFICATION	TEST CONDITION	RESULT
1	HARMONIC	EN61000-3-2 CLASS A	I/P : 230VAC /50HZ O/P : FULL LOAD Ta : 25°C	PASS



10W High Green Reliable Medical On Board Type MFM-10 series

2	CONDUCTION	EN55011 CLASS B	I/P : 230VAC /50HZ O/P : FULL LOAD / 50% LOAD Ta : 25°C	PASS Test by certified Lab
3	RADIATION	EN55011 CLASS B	I/P : 230VAC /50HZ O/P : FULL LOAD Ta : 25°C	PASS Test by certified Lab
4	E.S.D	EN61000-4-2 AIR: 15KV / Contact: 8KV	I/P : 230VAC /50HZ O/P : FULL LOAD Ta : 25°C	CRITERIA A
5	E.F.T	EN61000-4-4 INPUT: 2KV	I/P : 230VAC /50HZ O/P : FULL LOAD Ta : 25°C	CRITERIA A
6	SURGE	IEC61000-4-5 L-N:1KV	I/P : 230VAC /50HZ O/P : FULL LOAD Ta : 25°C	CRITERIA A

RELIABILITY TEST

NO	TEST ITEM	SPECIFICATION	TEST CONDITION	RESULT																																																
1	TEMPERATURE RISE TEST	MODEL : MFM-10-3.3 1. ROOM AMBIENT BURN-IN : 1.0hrs IP: 230VAC O/P: 100% LOAD TA= 21.1°C 2. HIGH AMBIENT BURN-IN : 1.0hrs IP: 230VAC O/P: 100% LOAD TA= 56.3°C	<table border="1"> <thead> <tr> <th>NO.</th> <th>Position</th> <th>ROOM AMBIENT 21.1°C</th> <th>HIGH AMBIENT Ta: 56.3°C</th> </tr> </thead> <tbody> <tr><td>1</td><td>C4</td><td>47.9°C</td><td>78.7°C</td></tr> <tr><td>2</td><td>C5</td><td>54.4°C</td><td>84.0°C</td></tr> <tr><td>3</td><td>C37</td><td>50.4°C</td><td>75.8°C</td></tr> <tr><td>4</td><td>R1</td><td>53.7°C</td><td>82.5°C</td></tr> <tr><td>5</td><td>U1</td><td>72.4°C</td><td>98.0°C</td></tr> <tr><td>6</td><td>T1</td><td>64.4°C</td><td>94.0°C</td></tr> <tr><td>7</td><td>C101</td><td>50.2°C</td><td>75.3°C</td></tr> <tr><td>8</td><td>D100</td><td>65.6°C</td><td>96.1°C</td></tr> <tr><td>9</td><td>BD1</td><td>43.6°C</td><td>76.1°C</td></tr> <tr><td>10</td><td>D2</td><td>68.7°C</td><td>98.4°C</td></tr> <tr><td>60</td><td>TA</td><td>21.1°C</td><td>56.3°C</td></tr> </tbody> </table>	NO.	Position	ROOM AMBIENT 21.1°C	HIGH AMBIENT Ta: 56.3°C	1	C4	47.9°C	78.7°C	2	C5	54.4°C	84.0°C	3	C37	50.4°C	75.8°C	4	R1	53.7°C	82.5°C	5	U1	72.4°C	98.0°C	6	T1	64.4°C	94.0°C	7	C101	50.2°C	75.3°C	8	D100	65.6°C	96.1°C	9	BD1	43.6°C	76.1°C	10	D2	68.7°C	98.4°C	60	TA	21.1°C	56.3°C	
NO.	Position	ROOM AMBIENT 21.1°C	HIGH AMBIENT Ta: 56.3°C																																																	
1	C4	47.9°C	78.7°C																																																	
2	C5	54.4°C	84.0°C																																																	
3	C37	50.4°C	75.8°C																																																	
4	R1	53.7°C	82.5°C																																																	
5	U1	72.4°C	98.0°C																																																	
6	T1	64.4°C	94.0°C																																																	
7	C101	50.2°C	75.3°C																																																	
8	D100	65.6°C	96.1°C																																																	
9	BD1	43.6°C	76.1°C																																																	
10	D2	68.7°C	98.4°C																																																	
60	TA	21.1°C	56.3°C																																																	
2	OVER LOAD BURN-IN TEST	NO DAMAGE 1 HOUR (MIN)	I/P : 230VAC O/P : 129.00% LOAD Ta : 25°C	TEST : OK																																																
3	LOW TEMPERATURE TURN ON TEST	NO DAMAGE 1 HOUR (MIN)	I/P : 264VAC / 100VAC O/P : FULL LOAD Ta : -35.0°C	TEST : OK																																																
4	HIGH HUMIDITY HIGH TEMPERATURE HIGH VOLTAGE TEST	AFTER 12 HOURS IN CHAMBER ON CONTROL 50°C NO DAMAGE	I/P : 272VAC O/P : FULL LOAD Ta : 50°C HUMIDITY= 95.0% RH	TEST : OK																																																
5	TEMPERATURE COEFFICIENT	±0.03% /(0°C~50°C)	I/P : 230VAC O/P : FULL LOAD	±0.0032% /(0°C~50°C)																																																
6	STORAGE TEMPERATURE TEST	1. Thermal shock Temperature : -45°C ~ +100°C 2. Temperature change rate : 25°C / MIN 3. Dwell time low and high temperature : 30 MIN/EACH 4. Total test cycle : 10 CYCLE 5. Input/Output condition : STATIC		TEST : OK																																																
7	THERMAL SHOCK TEST	1. Thermal shock Temperature : -35°C ~ +55°C 2. Temperature change rate : 25°C / MIN 3. Dwell time low and high temperature : 30 MIN/EACH 4. Total test cycle : 16 CYCLE 5. Input/Output condition : 230VAC Full Load AC ON/OFF test turn on 3sec ; turn off 1sec @ 15CYCLE 230VAC Full Load AC ON turn on continue @ 1CYCLE		TEST : OK																																																
8	VIBRATION TEST	1 Carton & 1 Set (1) Waveform : Sine Wave (2) Frequency : 10~500Hz (4) Acceleration : 5G (5) Test Time : 60 min in each axis (X.Y.Z) (6) Ta : 25°C		TEST : OK																																																



10W High Green Reliable Medical On Board Type MFM-10 series

9	CAPACITOR LIFE CYCLE	:SUPPOSE C101 IS THE MOST CRITICAL COMPONENT					
		(1) I/P : 230VAC	O/P : FULL LOAD	Ta= 25.0°C	LIFE TIME	(1).	397820.8 HRS
		(2) I/P : 230VAC	O/P : FULL LOAD	Ta= 50.0°C	LIFE TIME	(2).	141678.4 HRS
		(3) I/P : 230VAC	O/P : 75% LOAD	Ta= 50.0°C	LIFE TIME	(3).	162751.4 HRS
		(4) I/P : 230VAC	O/P : 50% LOAD	Ta= 50.0°C	LIFE TIME	(4).	234746.9 HRS
10	MTBF	Conducted by Parts Stress Analysis Prediction 9314.1K hrs min. Telcordia SR-332 (Bellcore) ; 1756.2K hrs min. MIL-HDBK-217F (25°C)					
11	DMTBF /Accelerated Life test	Demonstration Mean Time Between Failure (Expected Life): Above 30000HRS @ TA				50°C	

TEST RESULT	TESTER	REVIEW	APPROVAL
PASS	LIUTT		WANGDZ